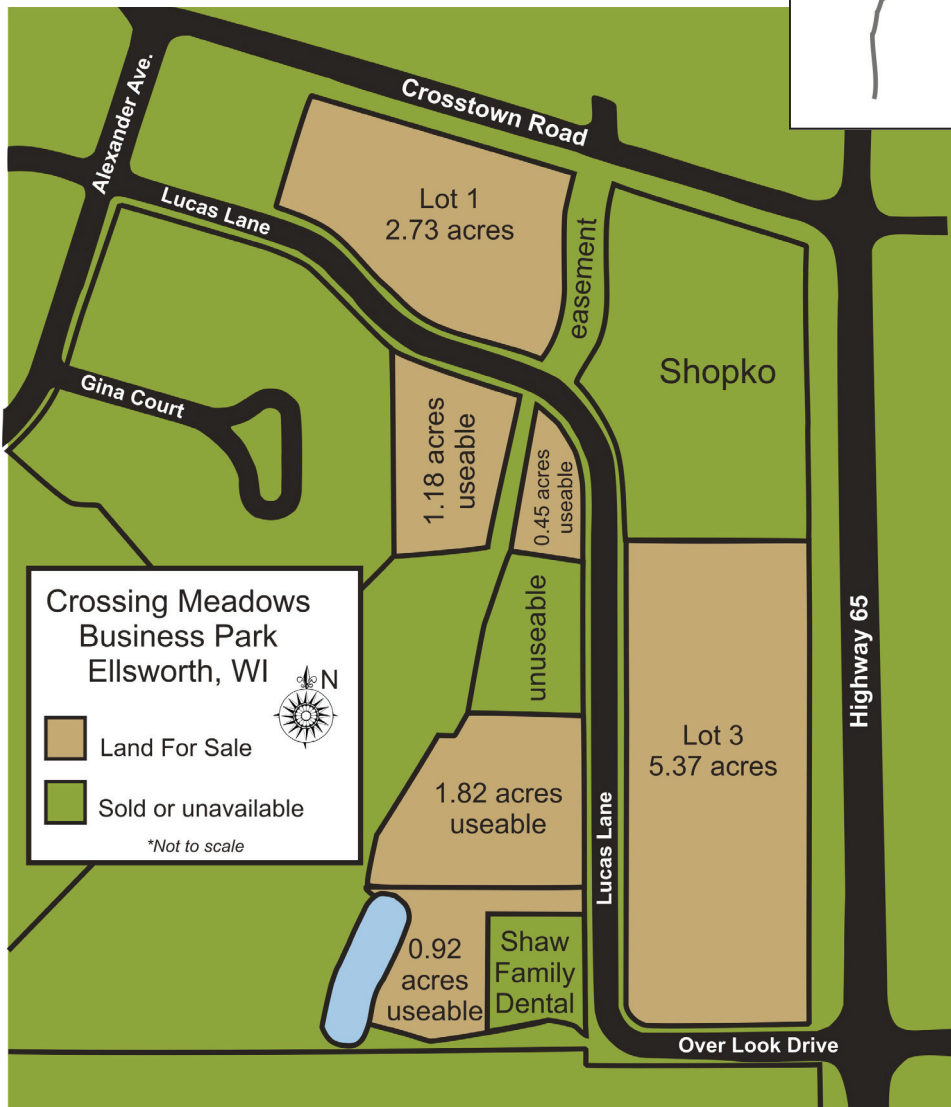




# CHOOSE ELLSWORTH, WISCONSIN

## Ellsworth Crossing Meadows Business Park



### Crossing Meadows Business Park

- Shovel-ready sites with utilities and streets installed
- Anchor tenant in place
- Perfect for professional offices, commercial, retail, service, restaurant and light industry
- 10+ acres available
- \$45,000 per acre land price, incentives available
- Excellent access to major transportation routes of US Highways 10 and 63, and State Highways 65 and 72
- Village-owned property
- For further information contact:

Village of Ellsworth  
 130 N. Chestnut St.  
 Ellsworth, WI 54011  
 715-273-4742  
[www.villageofellsworth.org](http://www.villageofellsworth.org)