

DEVELOPMENT SITE
 ZONED B1
 (BUSINESS/COMMERCIAL
 DISTRICT) 50' BUILDING
 HEIGHT.

© 2017 DigitalGlobe ©CNES (2017) Distribution Airbus DS © 2017 Microsoft Corporation

File Name: P:\07094973\07094973\08738006\CADD\ExhibitA\Information.dwg

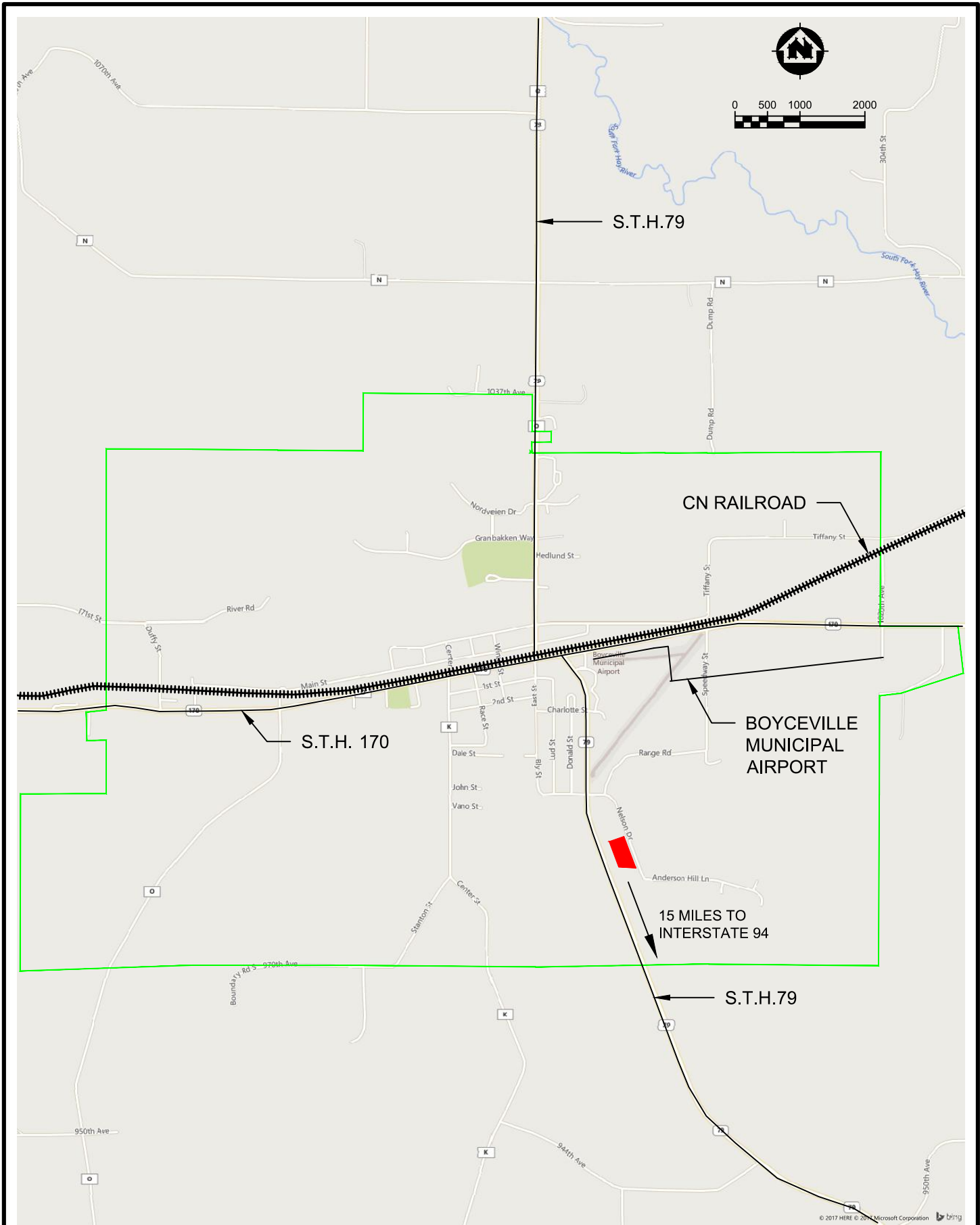


ARCHITECTURE | ENGINEERING | ENVIRONMENTAL
 FUNDING | PLANNING | SURVEYING
 11 E Marshall St Rice Lake, WI 54868
 (715) 234-1009 (888) 869-1215
 www.msa-ps.com
 © MSA Professional Services, Inc.

Village of Boyceville
 Dunn County, Wisconsin

Site Information

FILE NO.
 08738006
 Exhibit 2



File Name: P:\070407\070407\08738006\CADD\Exhibit4 Transportation.dwg



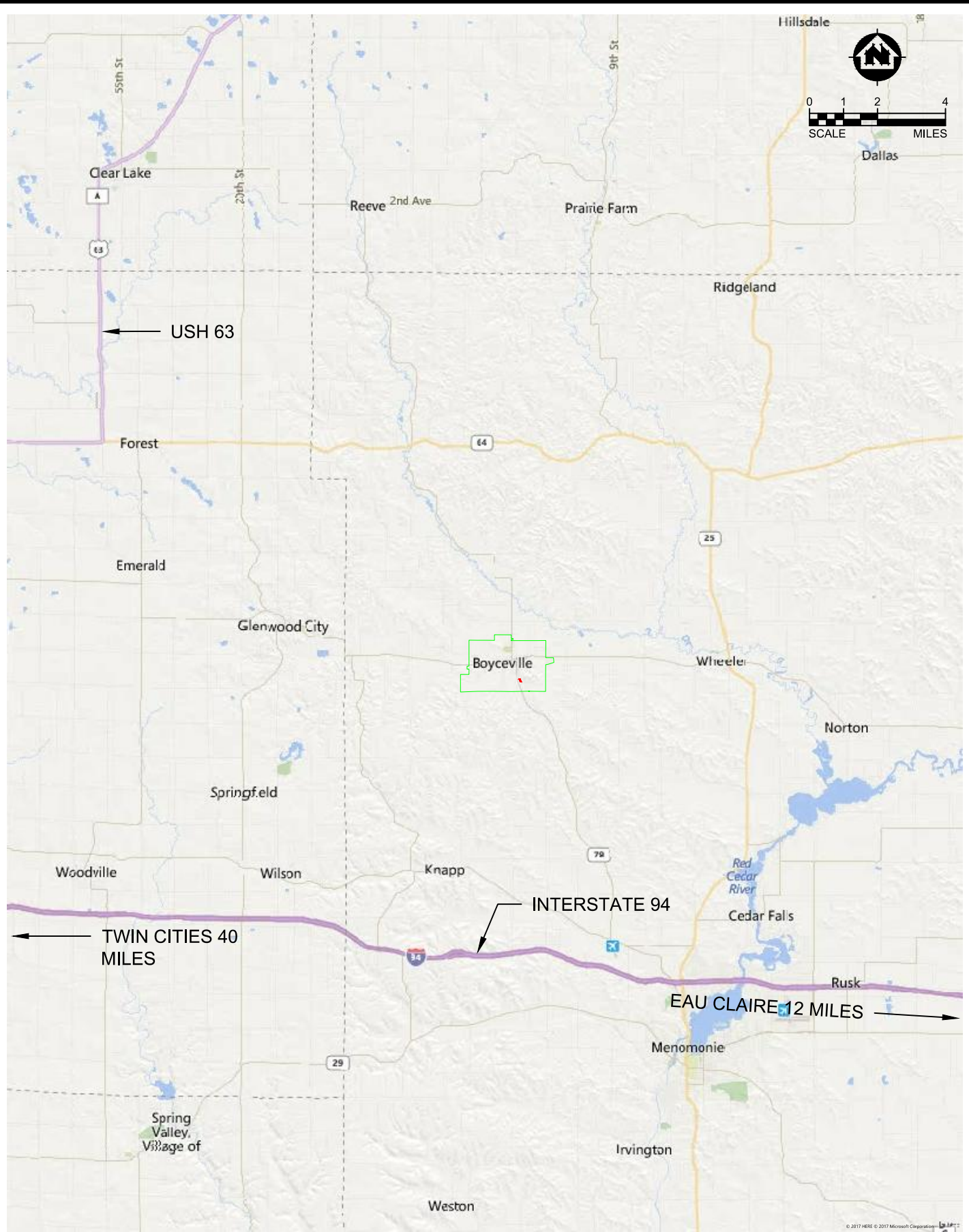
ARCHITECTURE | ENGINEERING | ENVIRONMENTAL
 FUNDING | PLANNING | SURVEYING
 11 E Marshall St Rice Lake, WI 54868
 (715) 234-1009 (888) 869-1215
 www.msa-ps.com
 © MSA Professional Services, Inc.

Village of Boyceville
 Dunn County, Wisconsin

Local Transportation

FILE NO.
 08738006

Exhibit 4



File Name: P:\070\0407\2017\08273006\CADD\Exhibit5Transportation.dwg

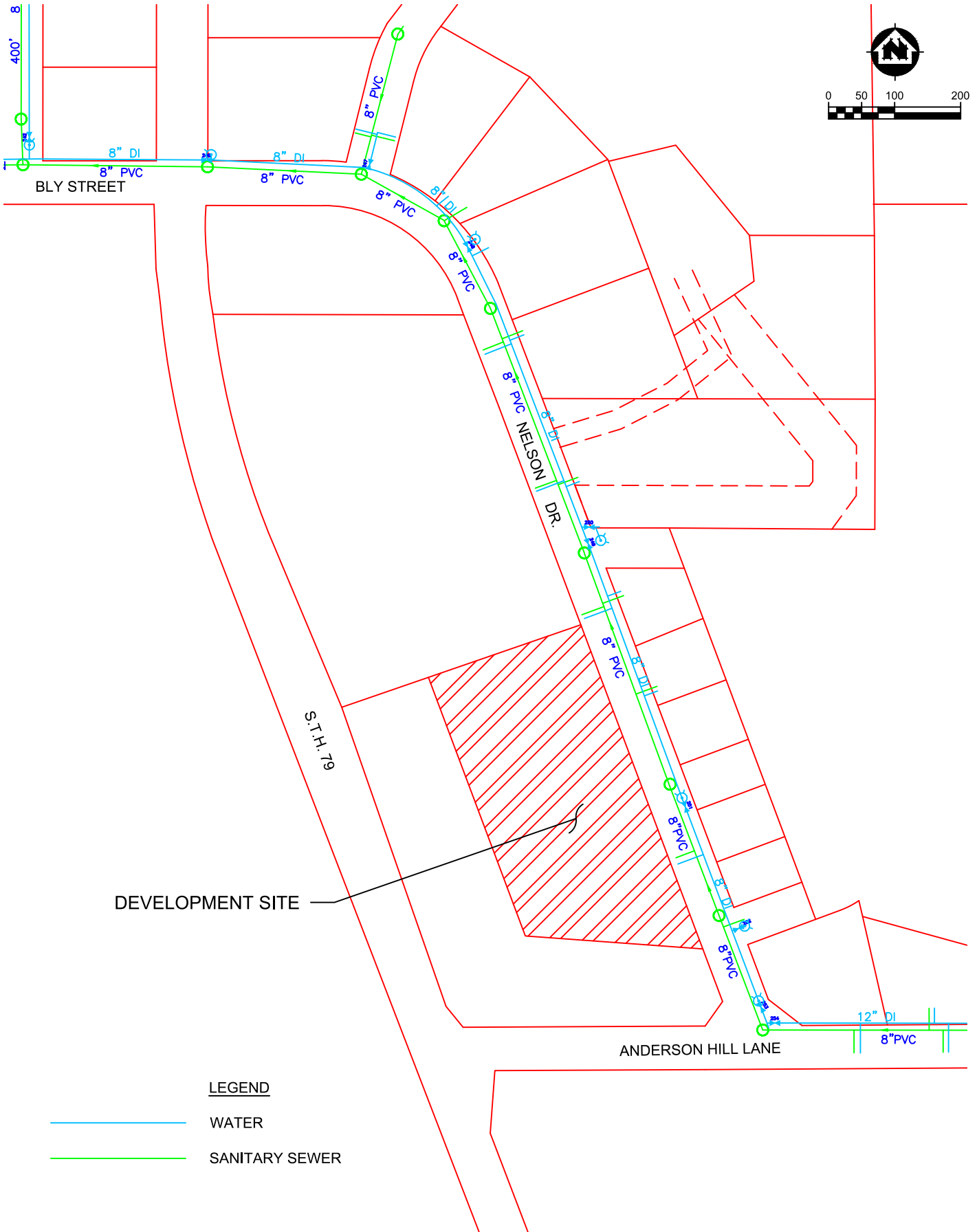


ARCHITECTURE | ENGINEERING | ENVIRONMENTAL
 FUNDING | PLANNING | SURVEYING
 11 E Marshall St Rice Lake, WI 54868
 (715) 234-1009 (888) 869-1215
 www.msa-ps.com
 © MSA Professional Services, Inc.

Village of Boyceville
 Dunn County, Wisconsin



Regional Transportation

FILE NO.
 08738006
 Exhibit 5



DEVELOPMENT SITE

LEGEND

-  WATER
-  SANITARY SEWER



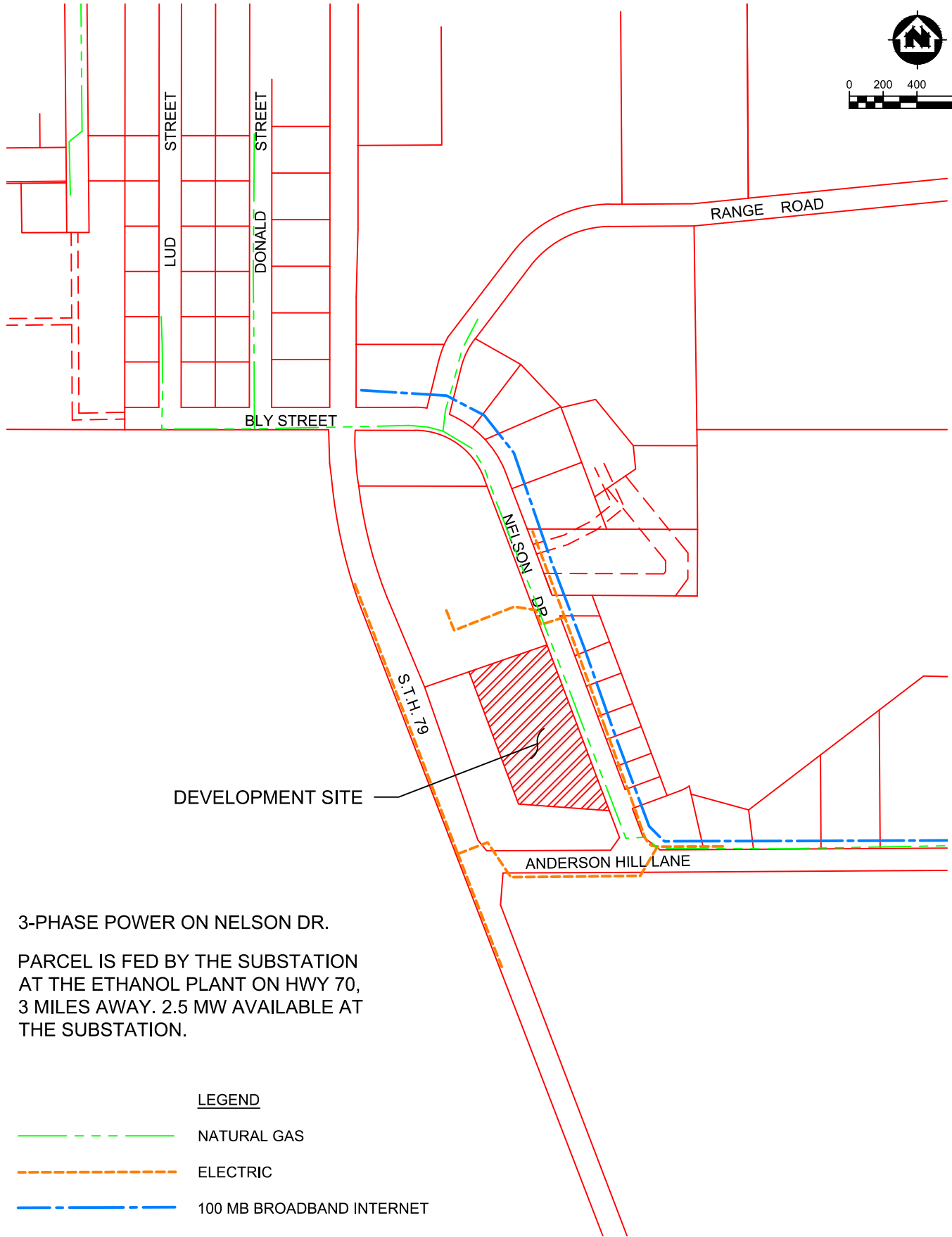
ARCHITECTURE | ENGINEERING | ENVIRONMENTAL
 FUNDING | PLANNING | SURVEYING
 11 E Marshall St Rice Lake, WI 54868
 (715) 234-1009 (888) 869-1215
 www.msa-ps.com
 © MSA Professional Services, Inc.

Village of Boyceville
 Dunn County, Wisconsin

Public Utilities

FILE NO.
 08738006

Exhibit 6






DEVELOPMENT SITE

3-PHASE POWER ON NELSON DR.

PARCEL IS FED BY THE SUBSTATION AT THE ETHANOL PLANT ON HWY 70, 3 MILES AWAY. 2.5 MW AVAILABLE AT THE SUBSTATION.

LEGEND

-  NATURAL GAS
-  ELECTRIC
-  100 MB BROADBAND INTERNET

File Name: P:\07040730\073008730006\CAD\EXHIBIT1088.dwg



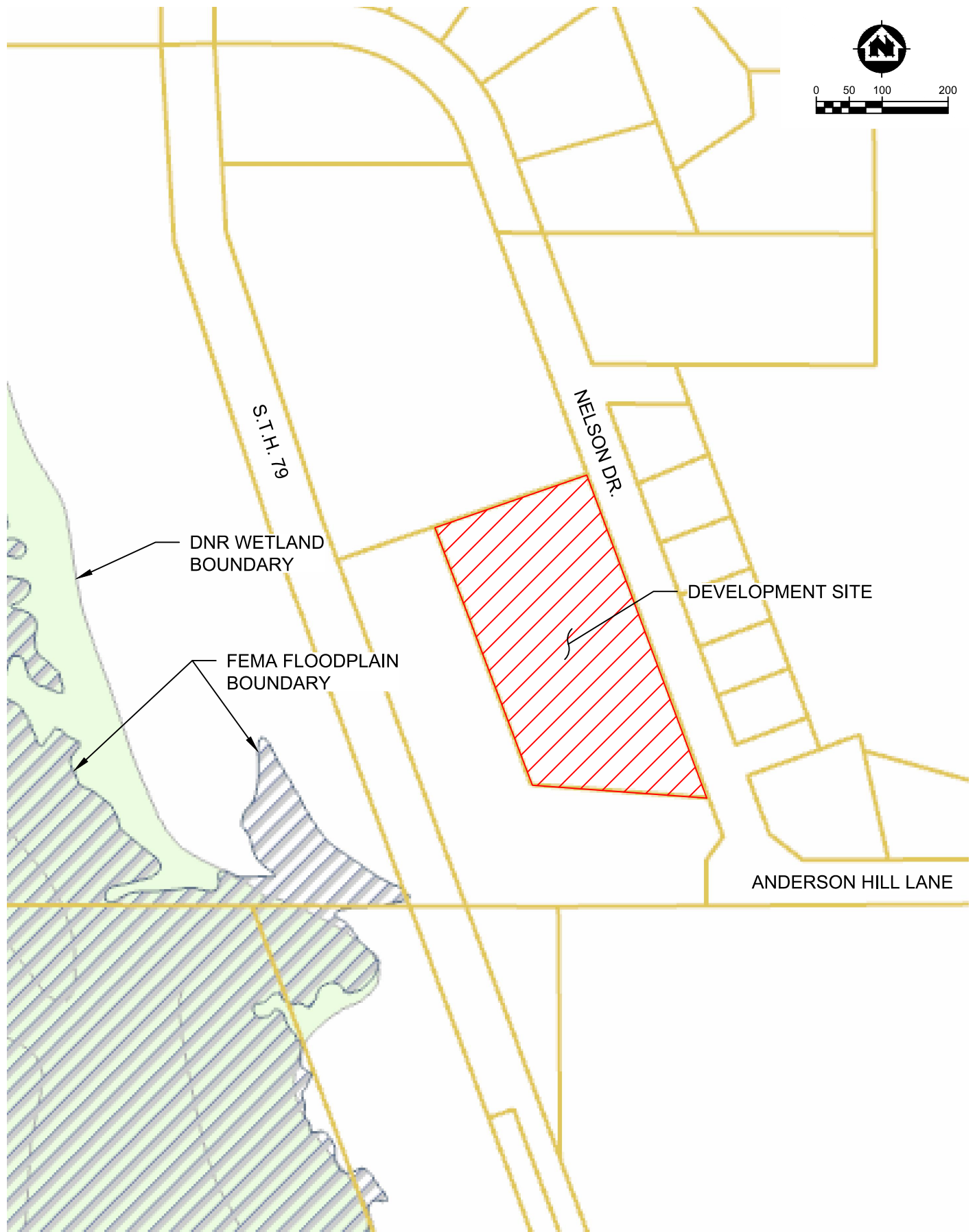
ARCHITECTURE | ENGINEERING | ENVIRONMENTAL
 FUNDING | PLANNING | SURVEYING
 11 E Marshall St Rice Lake, WI 54868
 (715) 234-1009 (888) 869-1215
 www.msa-ps.com
 © MSA Professional Services, Inc.

Village of Boyceville
 Dunn County, Wisconsin

Private Utilities

FILE NO.
08738006

Exhibit 7



DNR WETLAND BOUNDARY

FEMA FLOODPLAIN BOUNDARY

DEVELOPMENT SITE

ANDERSON HILL LANE

S.T.H. 79

NELSON DR.



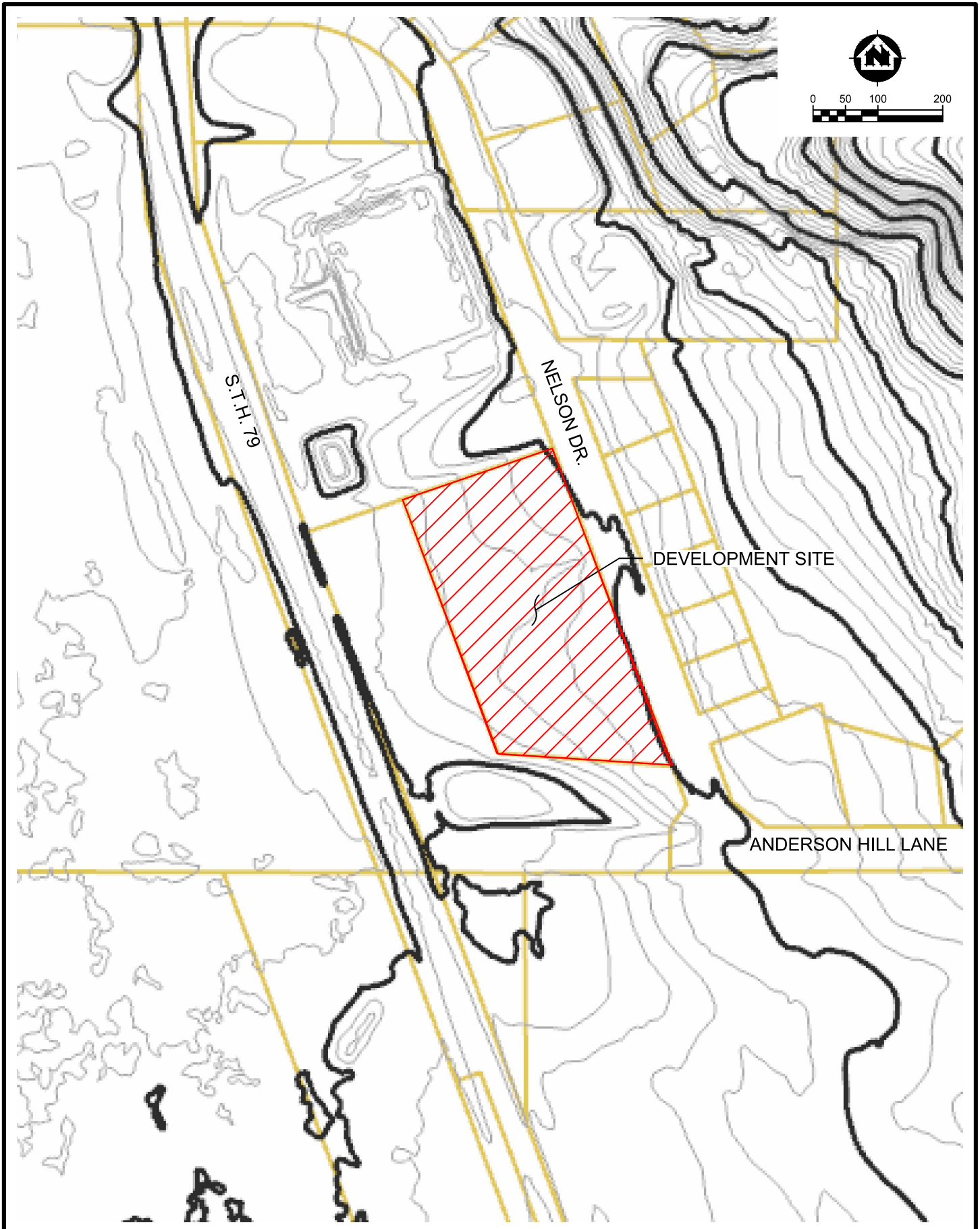
ARCHITECTURE | ENGINEERING | ENVIRONMENTAL FUNDING | PLANNING | SURVEYING
11 E Marshall St Rice Lake, WI 54868
(715) 234-1009 (888) 869-1215
www.msa-ps.com
© MSA Professional Services, Inc.

Village of Boyceville
Dunn County, Wisconsin

Floodplain and Wetlands

FILE NO.
08738006
Exhibit 8

File Name: P:\070407\070407\080738006\CADD\Exhibit8.mxd



File Name: P:\070407\070407\080738006\CADD\Exhibit9Topographic.dwg



ARCHITECTURE | ENGINEERING | ENVIRONMENTAL
 FUNDING | PLANNING | SURVEYING
 11 E Marshall St Rice Lake, WI 54868
 (715) 234-1009 (888) 869-1215
 www.msa-ps.com
 © MSA Professional Services, Inc.

Village of Boyceville
 Dunn County, Wisconsin

Topographic Map
 Contour Interval: 2 Feet

FILE NO.
 08738006

Exhibit 9